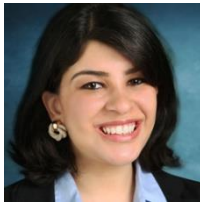


ESG Impact on Strategy and Investments

CME Webinar • November 19, 2020 • 11 am -12 pm

- Is ESG yielding higher than average returns on investments, driving shareholder returns and positively influencing financial performance?
- Which corporations are leading/adopting the movement and why?
- What specific metrics are being used to track success?

Environmental, social, and governance (ESG) considerations are becoming essential in evaluating companies in which to invest. The omnipresent risks of ocean pollution, greenhouse gases and toxic waste are affecting ecosystems and driving the synergy of investments to reshape the strategy for converting abundant waste and natural resources into high-value energy, chemicals, plastics, materials and service solutions. Join us to leverage the ESG investment trend.



Trisha Taneja, Deutsche Bank Head of ESG Advisory, Capital Markets, in London, assesses the impact of ESG on market access and business development. Renowned expert on green and social bonds, sustainable lending, ESG risk in fixed-income, and carbon, she previously worked at Sustainalytics.



Beatriz Da Cunha, Americas Lead on ESG Integration for BlackRock Sustainable Investing, responsible for delivering frameworks and driving the integration of ESG information across BlackRock's active investment teams. Previously served as Global Business Manager for BlackRock Real Assets Private Equity investments.



Steve d'Incelli is a Managing Director at SK Capital, a private investment firm in the specialty chemicals, materials and pharmaceuticals sectors. He advances the investment strategy and execution focusing on both specialty and fine chemicals. Board member at CME, Noramco, and Wavelength Pharmaceuticals.



Patricia Grad (moderator) is Senior Managing Director, Head of Investor Relations at Arsenal Capital where she focuses on ESG investors relations, fundraising and marketing. She joined the firm in 2017. Previously, she served at Actis, Irving Place Capital Management, and Cambridge Associates.



Event Schedule

Free Webinar (ET)
11:00 am - 12:00 pm

Registration

www.cme-stem.org

CME Board

Co-Chairs

Steve Barnett
Ksenia Takhistova

Secretary

Owen Jappen

Treasurer

Robert Nolan

Directors

Karin Bartels
Steve D'Incelli
Marios Hatzikyriakou
Brian Orkin
Guy Penard